

発表方法・Presentation Process

File submission

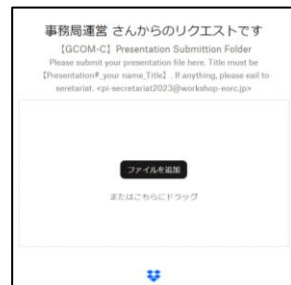
事前にDropbox Upload linkに資料をアップしてください。
Upload your presentation file into Drop Box File Request by the day of your presentation.

[Upload Link](#)

File Name : 【Presentation date(MMDD)_Name_RevNo.】

Example : 1118_Shohei_Otani

Due Date : **one day before the program**



当日の発表方法 On the day of your presentation

演題上のモニターとマウス、キーボードを使用し、資料を確認しながら発表を行ってください。

There are a monitor for check your slides and a mouse and a keyboard to forward pages. Please start your presentation.

講演が終了したら、自席に戻ってください。

When you finish, please go back to your seat.



オンライン講演者・Online presenters

11月6日、7日にオンライン講演者の為の接続テストがございます。

We will have online connection test for online presenters on 6th and 7th in November.

<https://prime-conf.webex.com/prime-conf-jp/j.php?MTID=m8ca05bbcc34d084687eb80490e1fd30d>
(Password: piws)

Schedule 11/6 9:00~11:00 JST (for US), 16:00~18:00 JST (for Europe)

11/7 9:00~11:00 JST (for US), 16:00~18:00 JST (for Europe)

| | |
|---|---|
| FAQ | |
| 提出後に修正があった時 If you revised after your submission | Drop Boxに再度アップをお願いします。 Please upload again into the Dropbox. |
| 発表直前まで修正を行った場合 If you revised a the last moment and have not time to upload. | 再アップロード、もしくはUSBで演台PCに移動、発表を行う。 入れたものは記録の為に演台PCに保存しておく。 You can re-upload into Dropbox or use USB to move your file into the PC at podium. |

For any questions, please email to Secretariat. <pi-secretariat2024@workshop-eorc.jp>

発表方法・Presentation Process

File submission

事前にDropbox Upload linkに資料をアップしてください。
Upload your presentation file into Drop Box File Request by the day of your presentation.

[Upload Link](#)

File Name : 【Presentation date(MMDD)_Name_RevNo.】

Example : 1119_Shohei_Otani

Due Date : **one day before the program**



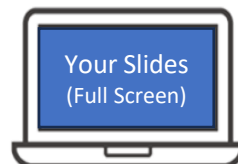
当日の発表方法 On the day of your presentation

事前にアップされた資料は演台上のPCで確認できます。
そこから自分の資料を選択し、開く。

You can check your uploaded presentation at PC on podium.
Select and open your file.

全画面で画面共有、自己紹介し、発表を始める
Start screen sharing online, make your slides to full screen, introduce yourself, and begin your presentation.

講演が終了したら自分の資料を閉じデスクトップ画面に戻る
When you finish, please close your presentation and back to desktop.



| FAQ | |
|---|---|
| 提出後に修正があった時 If you revised after your submission | Drop Boxに再度アップをお願いします。 Please upload again into the Dropbox. |
| 発表直前まで修正を行った場合 If you revised a the last moment and have not time to upload. | 再アップロード、もしくはUSBで演台PCに移動、発表を行う。 入れたものは記録の為に演台PCに保存しておく。 You can re-upload into Dropbox or use USB to move your file into the PC at podium. |

For any questions, please email to Secretariat. <pi-secretariat2024@workshop-eorc.jp>

File submission

事前にDropbox Upload linkに資料をアップしてください。
Upload your presentation file into Drop Box File Request by the day of your presentation.

[Upload Link](#)

File Name : 【Presentation date(MMDD)_Name_RevNo.】

Example : 1119_Shohei_Otani

Due Date : **one day before the program**



当日の発表方法 On the day of your presentation

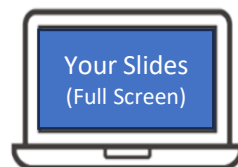
事前にアップされた資料は演台上のPCで確認できます。
そこから自分の資料を選択し、開く。

You can check your uploaded presentation at PC on podium.
Select and open your file.



全画面にし、自己紹介後、発表を始める。

Make your slides to full screen, introduce yourself, and start your presentation.



講演が終了したら自分の資料を閉じデスクトップ画面に戻る

When you finish, please close your presentation and back to desktop.



| FAQ | |
|---|---|
| 提出後に修正があった時 If you revised after your submission | Drop Boxに再度アップをお願いします。 Please upload again into the Dropbox. |
| 発表直前まで修正を行った場合 If you revised a the last moment and have not time to upload. | 再アップロード、もしくはUSBで演台PCに移動、発表を行う。 入れたものは記録の為に演台PCに保存しておく。 You can re-upload into Dropbox or use USB to move your file into the PC at podium. |

For any questions, please email to Secretariat. [<pi-secretariat2024@workshop-eorc.jp>](mailto:pi-secretariat2024@workshop-eorc.jp)

Submission Links

| Dropboxリンク | 提出リンク |
|---|---|
| 18 Nov_Joint Plenary Session | https://www.dropbox.com/request/5GvqZFJbzQp3N46QK8IW |
| 19 Nov_ALOS-4 CVST | https://www.dropbox.com/request/wzJN2tgyU3BZRHBosIS |
| 19 Nov_GCOM-C | https://www.dropbox.com/request/B5vCcR1eWcqRo7cp7xq2 |
| 19 Nov_GPM | https://www.dropbox.com/request/LhZkCOFXMfFo5KjBzy7E |
| 19 Nov_AMSR3 & GCOM-W | https://www.dropbox.com/request/eCQFTq2heQdMIm9pJq6N |
| 19 Nov_ALOS Plenary | https://www.dropbox.com/request/iVQ8DvdzQUd1wMz3EvUB |
| 19 Nov_ALOS-2-4 Application 1 | https://www.dropbox.com/request/Ree4G6GFbf6yj4PD3zsm |
| 19 Nov_MOLI | https://www.dropbox.com/request/XsStHXNYx1nflc1cNYo0 |
| 19 Nov_AOS_PMM | https://www.dropbox.com/request/dt86itl7oyjdgkHmGh9X |
| 20 Nov_AMSR & PMM | https://www.dropbox.com/request/hDH23q2R05EActi4fQ1S |
| 20 Nov_GCOM-C | https://www.dropbox.com/request/sxgXqxlit1thL2T1UTy |
| 20 Nov_GPM | https://www.dropbox.com/request/eKFLOf4GMjjF0L7uZ7Rv |
| 20 Nov_AMSR3 & GCOM-W | https://www.dropbox.com/request/giOIYshHX3YSJKRBdEux |
| 20 Nov_ALOS-2-4 K&C | https://www.dropbox.com/request/ukeJYNSQO0cuaOTRokyM |
| 20 Nov_ALOS-2-4 Cryosphere and Permafrost | https://www.dropbox.com/request/UdAuHhZAdFFXnkg47e8m |
| 20 Nov_ALOS-2-4 Cal Val | https://www.dropbox.com/request/fzXpABAG6qPnTxhrU5Mi |
| 20 Nov_Multidisciplinary application research (with ALOS) | https://www.dropbox.com/request/APpH00J0X2fyzgOb6hcY |
| 21 Nov_GCOM-C | https://www.dropbox.com/request/0i4sFzIhfv0IREL5n0bl |
| 21 Nov_GPM | https://www.dropbox.com/request/rrLp0qOgJqGoSo5UpHiB |
| 21 Nov_AMSR3 & GCOM-W | https://www.dropbox.com/request/ZbS8C9YwaEbogHAo9P3q |
| 21 Nov_Multidisciplinary application research (no ALOS) | https://www.dropbox.com/request/yi148dV9jzM6HvkdjBbE |
| 21 Nov_ALOS-2-4 Disaster | https://www.dropbox.com/request/GLW9yN4j39BAp77ptCUO |
| 21 Nov_ALOS-2-4 Forest & Wetland | https://www.dropbox.com/request/HlppWTHauMUDVI6nEdB5 |
| 21 Nov_MK & C Closed Session | https://www.dropbox.com/request/dt86itl7oyjdgkHmGh9X |
| 22 Nov_EarthCARE | https://www.dropbox.com/request/NZaLAedQ2kXKAip2n3eK |
| 22 Nov_GCOM-C | https://www.dropbox.com/request/OJ87B0nqEkMEDXNRMwaO |